

## Message from NYeC Executive Director, Valerie Grey



Welcome to the 8th edition of the *SHIN-NY Spotlight*! We produce the Spotlight to share updates on progress the state is making in advancing health information exchange (HIE) through the [Statewide Health Information Network for New York \(SHIN-NY\)](#). As an enterprise, we continue to be focused on executing the *SHIN-NY 2020 Roadmap*.

I want to thank Governor Cuomo and the New York State Legislature for their continued support. The accomplishments we have made so far and the progress to come would not be possible without their inclusion of SHIN-NY funding in this year's State budget. This investment in the SHIN-NY's future is essential and pays big dividends in improving health and reducing costs.

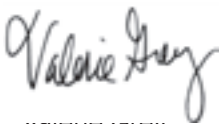
I'm also excited to share the news that NYeC and all Quantified Entities that form the SHIN-NY have obtained Health Information Trust Alliance (HITRUST) certification. This is a significant accomplishment that we are all so proud of!

Since the last *SHIN-NY Spotlight*, proposed federal policy changes related to interoperability and information blocking were released by both the Centers for Medicare & Medicaid Services and the Office of the National Coordinator for Health Information Technology. Additionally, the long-awaited revised proposal for the Trusted Exchange Framework and Common Agreement was released. We have been carefully reviewing these proposals as well as working with our stakeholders to gather feedback to inform a comprehensive and coordinated comment as part of our advocacy efforts. We believe these proposals present opportunities for the SHIN-NY and its participants throughout the state.

We're excited to continue working together to ensure that the SHIN-NY reaches its maximum potential and HIE is universally used as a tool to make lives better.

Thank you for reading!

Take care,



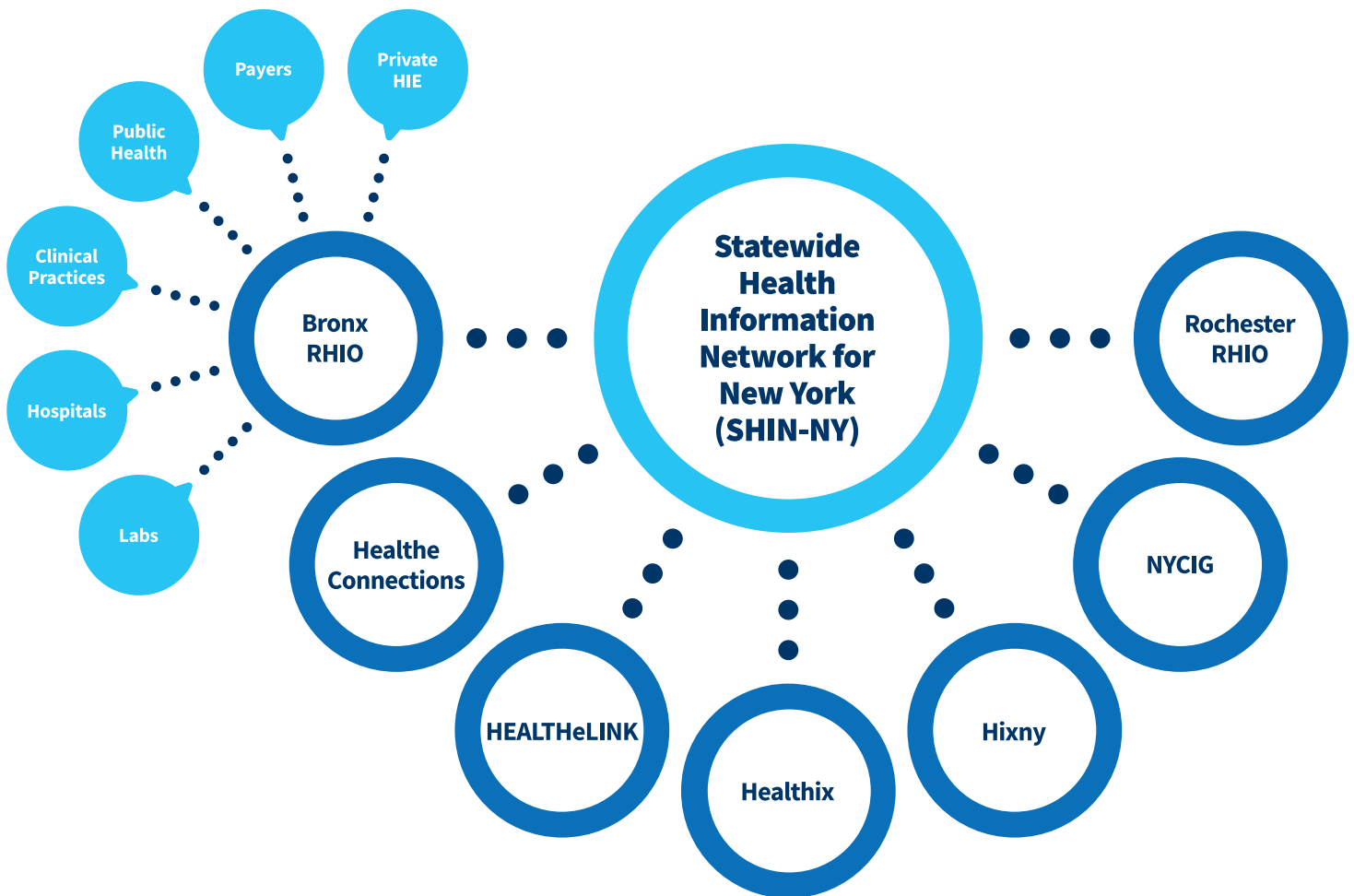
valerie grey  
Executive Director  
New York eHealth Collaborative

# What is the SHIN-NY?

The [Statewide Health Information Network for New York \(SHIN-NY\)](#) connects regional networks, or [Qualified Entities \(QEs\)](#), that allow participating healthcare professionals, with patient consent, to quickly access electronic health information and securely exchange data statewide.

The regional networks enroll participants within their community, including those from hospitals, clinics, FQHCs, home care agencies, payers, and ambulatory practices, among others, so they can access and exchange electronic health information with participants in their region.

The SHIN-NY enables collaboration and coordination of care to improve patient outcomes, reduce unnecessary and avoidable tests and procedures, and lower costs.



# Final State Budget Supports Health Information Exchange to Advance Healthcare Transformation and Improve Patient Outcomes

In response to the newly adopted 2019-2020 New York State Budget, the New York eHealth Collaborative (NYeC) applauded Governor Cuomo and the Legislature's continued support of transforming New York's healthcare system through health information exchange by providing critical funding for the Statewide Health Information Network for New York (SHIN-NY).

"On behalf of New York's healthcare providers, care team members, and patients, the New York eHealth Collaborative thanks Governor Cuomo, Senate Majority Leader Stewart-Cousins, and Assembly Speaker Heastie for their continued investment in healthcare information exchange and inclusion in this year's budget," said Valerie Grey, Executive Director of NYeC. "As healthcare increasingly focuses on value-based care, the Statewide Health Information Network for New York creates the connection that allows for the sharing of key patient data—resulting in better use of resources, reducing unnecessary duplicative tests and procedures, and helping individuals and communities stay healthier."

## Federal Updates: Proposed Policy Changes, Draft Two of TEFCA Released

In February, the Centers for Medicare & Medicaid Services (CMS) released the proposed [Interoperability and Patient Access Proposed Rule](#) outlining opportunities to make patient data more useful and transferable. The proposed policy changes build upon the MyHealthEData initiative to improve patient access and advance electronic data exchange and care coordination throughout the healthcare system.

The Office of the National Coordinator for Health Information Technology (ONC) simultaneously released a proposed [new rule implementing provisions of the 21st Century Cures Act regarding information blocking](#).

The proposed rule aims to increase innovation and competition through secure access, exchange, and use of electronic health information and calls on the healthcare industry to adopt standardized application programming interfaces (APIs).

In April, CMS and ONC extended the comment period for these proposed rules until June 3, 2019. These are major proposed changes and NYeC is submitting a comprehensive and coordinated comment incorporating stakeholder feedback as a part of our advocacy efforts.

Additionally, in mid-April the second draft of the [Trusted Exchange Framework and Common Agreement \(TEFCA\)](#) was released, outlining a common set of principles, terms, and conditions to support the development of a common agreement to help enable nationwide exchange of electronic health information across networks. ONC requests comments in response to this draft by June 17, 2019. To share any comments with NYeC, please email [publiccomments@nyehealth.org](mailto:publiccomments@nyehealth.org) by June 7, 2019.

## HealtheConnections, HealthlinkNY Merger Finalized

Earlier this year, HealtheConnections and HealthlinkNY officially announced the organizations will merge together into HealtheConnections, forming a health information exchange (HIE) that serves participants in the Central New York, Southern Tier, and Hudson Valley regions.

HealtheConnections and HealthlinkNY are Qualified Entities operating and connecting their HIEs with others in New York State that together form the Statewide Health Information Network for New York (SHIN-NY).

"We look forward to expanding the work we're doing to support the broader reach this merger brings," commented Rob Hack, president and CEO of HealtheConnections.

The merger went into effect May 1, 2019 and aligns with the strategic goals of efficiency and affordability outlined in the SHIN-NY 2020 Roadmap. QE partnerships enable the SHIN-NY enterprise to maximize efficiencies while providing high value to providers, patients, and payers.

"As this process comes to a close, it is energizing to look toward the future to deliver the value that our participants have come to rely on," Hack said.

[Full news release from HealtheConnections](#)

## New York State Patient-Centered Medical Home Recognition Program

The [New York State Patient-Centered Medical Home](#) (NYS PCMH) recognition program improves primary care through care coordination, population health, evidence-based guidelines, and effective use of health information technology to meet patient needs. New York State contracted with 15 organizations that specialize in NYS PCMH transformation and are available at no cost to participating practices. NYeC is one of the 15, serving practices in western NY, NYC, and Long Island. A comprehensive list of TA agents in other regions please can be found [here](#). NYeC offers free [NYS PCMH services](#) to help practices deliver high-quality, coordinated care, earn payment incentives, prepare to thrive under value-based payment arrangements, and achieve NYS PCMH recognition. Services are available to practices new to PCMH, practices who are renewing their PCMH recognition, and CPC+ practices.

To date, NYeC has assisted 78 practices in achieving NYS PCMH recognition and we are working with many more. Space in the program is limited and time-sensitive so enroll today! [Contact NYeC's team today to learn more!](#)

## Update: NYeC, QEs Achieve HITRUST Certification

At the close of 2018, NYeC and all QEs obtained Health Information Trust Alliance (HITRUST) certification, a significant milestone in an effort to further enhance secure health information exchange across New York State and fulfill a requirement set by the New York State Department of Health.

HITRUST normalizes various security frameworks, standards, regulations, and best practices for healthcare organizations (e.g. HIPAA, NIST 800-53, NIST Cyber Security & Risk Management Framework, MARS-E, Promoting Interoperability (formerly known as Meaningful Use), and more) into one Common Security Framework (CSF). Informed by the Centers for Medicaid and Medicare, the HITRUST CSF incorporates required security governance (organization, policies, etc.) and security control practices (people, process, technology), including specifics to establish the controls needed to manage the confidentiality, integrity, and availability of protected health information with HIEs and connecting organizations.

## SHIN-NY Connections Initiative (SCI) Extended

The New York State Department of Health (NYSDOH) recently granted a funding extension for the SHIN-NY Connections Initiative (SCI). The program provides funding to organizations enrolled in New York State's model of Patient Centered Medical Home (PCMH) to connect to one of the state's Qualified Entities (QE) and exchange health data through the Statewide Health Information for Network (SHIN-NY). Similar to the Data Exchange Incentive Program, another program managed by NYeC on behalf of NYSDOH, SCI is designed to help defray the cost for an organization connecting to a QE.

Eligible organizations now have until January 31, 2020 to complete SCI program milestones. SCI funding is limited and operated on a first-come, first-served basis.

For more information, please email [connectionsinitiative@nyhealth.org](mailto:connectionsinitiative@nyhealth.org).

## Summary of Changes to SHIN-NY Privacy and Security Policies

In March 2019, the New York State Department of Health (NYSDOH) released Version 3.6 of the SHIN-NY Privacy and Security Policies and Procedures for Qualified Entities and their Participants.

A summary of changes can be found at the link below.

[VIEW SUMMARY](#)

# Core Services Offered through the SHIN-NY

All QEs offer [free, basic services](#) to participating members.

## Patient Record Lookup

Patient Record Lookup functions like a highly secure search engine, **allowing participants to retrieve individual patient records from across the state after receiving consent from the patient.** Participants can easily look up patient records, no matter where patients have received care in the state.

## Alerts

Alerts allow participants to **receive real-time updates about their patients.** For example, if a patient enters or is discharged from a hospital, a subscribing provider can receive an Admittance, Discharge, Transfer alert. Similarly, a hospital can instantly be alerted if discharged patients subsequently visit another emergency room.

In short, this **automatic subscription service keeps providers informed of the status of their patients, further enhancing care coordination efforts** and creating an integral resource in reducing readmissions statewide.

## Secure Messaging

Secure Messaging gives participants the ability to **seamlessly exchange authenticated and encrypted clinical data.** It's similar to highly secure email between providers.

## Results Delivery

Results Delivery **provides diagnostic results and reports to ordering clinicians** and others designated to receive results.

## Provider & Public Health Clinical Viewers

A Clinical Viewer allows participants or authorized public health officials to **search for patient records** across all data sources on identifying information (demographics, medical identification number, etc.) The Clinical Viewer is web-based, eliminating the need to integrate with EHRs.

## Consent Management

Consent Management **tracks and verifies that a patient has provided consent** to share their records per New York State and federal law and other requirements defined by HIPAA.

## Usage of Core Services Over the Past Year (Mar 2018 - Mar 2019)



**60.9 MILLION**

**ALERTS DELIVERED TO CLINICIANS**

(e.g. emergency room visit, inpatient discharge)



**22.3 MILLION**

**PATIENT RECORD RETRIEVALS**

(via EHR and Clinical Viewer)

QEs may provide additional services above and beyond the Core Services and may charge for these “value-added services”. EHR vendors may also charge a connection fee. Providers are encouraged to talk to their [local QE](#) for more information.



### **Hixny: Shared Health Records & Coordinated Care Boosts Women's Health Conditions**

A woman's primary care provider and gynecologist have many areas of overlap, potentially resulting in duplicative tests and increased costs. Hixny health information exchange allows a physician to enter the exam room knowing results of relevant tests and observations noted and, ultimately, supports better care outcomes.

"It's not uncommon for patients to have multiple providers," says William Anyaegbunam, M.D., FRCOG, an obstetrician and gynecologist who practices at Complete Women's Care of Clifton Park. "Hixny collates the data from all these visits into one platform, bridging the gap between the providers."

[Read more about how Hixny is working to boost care for women's health conditions.](#)

---



### **HealthConnections: Supporting the State Innovation Model Grant and Regional Oversight Management Committees through Actionable Analytics**

Through HealthConnections' innovative myData analytics tool, providers receive data that is standardized, codified, deduplicated, and combined with consented community data that lives within the health information exchange. This tool is aligned to support State Innovation Model (SIM) Grant and Regional Oversight Management Committees (ROMC) through the Qualified Entity (QE) Quality Measurement Pilot.

The current pilot focus engages practices and payers in Central New York. In conjunction with these partners and the ROMC, HealthConnections is working to identify a set of priority quality measures and supporting clinical reports to build and deploy, as well as actively recruit practices to the program. Through this pilot program, HealthConnections anticipates expanded support for providers in conjunction with other value-based payment arrangements; QEs providing standard supplemental data in support of HEDIS measures and NCQA-certified Electronic Clinical Quality Measures); and streamlined provider/payer communications and enhanced collaboration.

[Read more on the HealthConnections' myData analytics tool here.](#)

## Who is Connected to the SHIN-NY?

Each QE enrolls a diverse set of participants within their community, based on the community's unique needs and patterns of care. QEs maintain complete and up-to-date lists of participants on their website, per NYS requirements.

To find out which providers in your region are connected to the SHIN-NY, please follow the links below:

[Bronx RHIO](#)

[HealtheConnections](#)

[HEALTHeLINK](#)

[Healthix](#)

[Hixny](#)

[NY Care](#)

[Information Gateway](#)

[Rochester RHIO](#)

## Contact Information

If you are interested in learning more please contact one of the State's QEs:

### **Bronx RHIO**

Charles Scaglione, Executive Director  
[cscaglio@bronxrhio.org](mailto:cscaglio@bronxrhio.org)

### **HealtheConnections**

Rob Hack, President and CEO  
[rhack@healtheconnections.org](mailto:rhack@healtheconnections.org)

### **HEALTHeLINK**

Dan Porreca, Executive Director  
[dporreca@wnyhealthelink.com](mailto:dporreca@wnyhealthelink.com)

### **Healthix**

Todd Rogow, President and CEO  
[trogow@healthix.org](mailto:trogow@healthix.org)

### **Hixny**

Mark McKinney, Chief Executive Officer  
[mmckinney@hixny.org](mailto:mmckinney@hixny.org)

### **NY Care Information Gateway (NYCIG)**

Nick VanDuyne, Executive Director  
[nick.vanduyne@nycig.org](mailto:nick.vanduyne@nycig.org)

### **Rochester RHIO**

Jill Eisenstein, Executive Director  
[jeisenstein@grrhio.org](mailto:jeisenstein@grrhio.org)